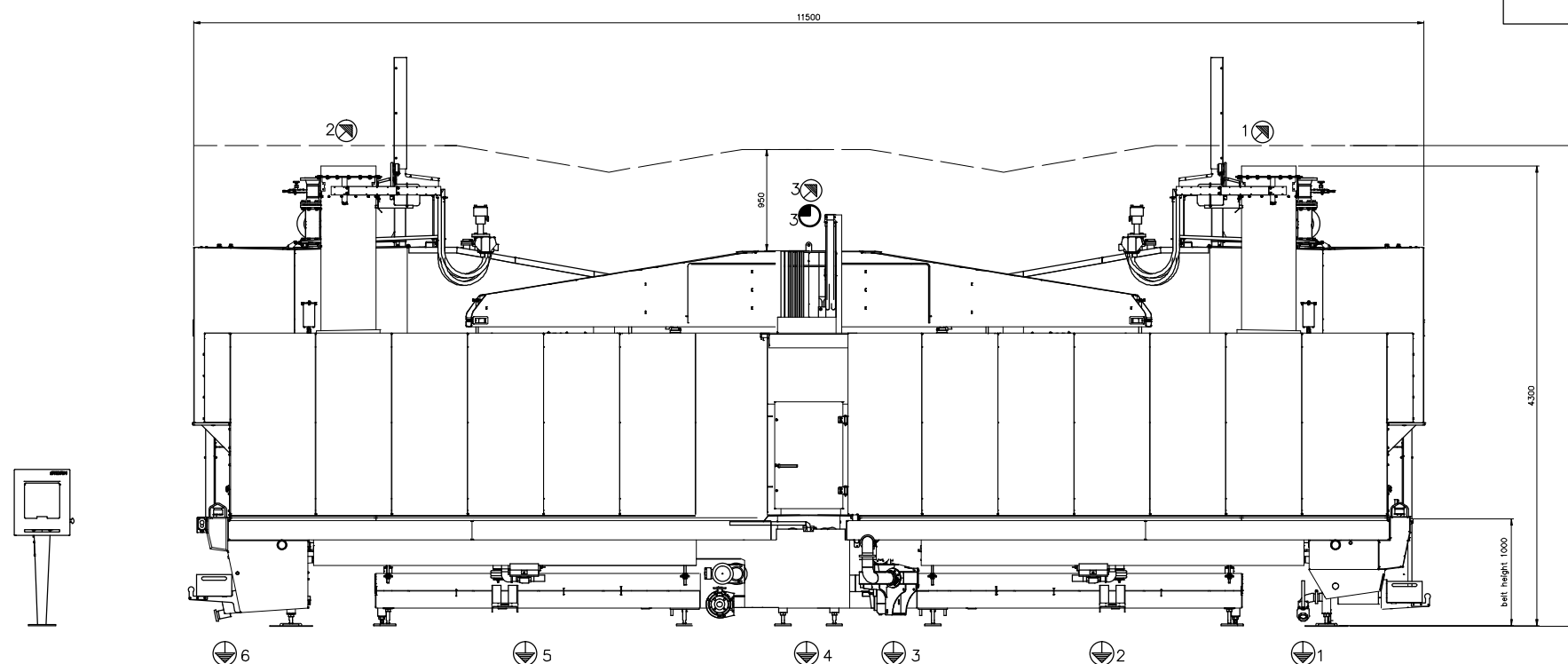


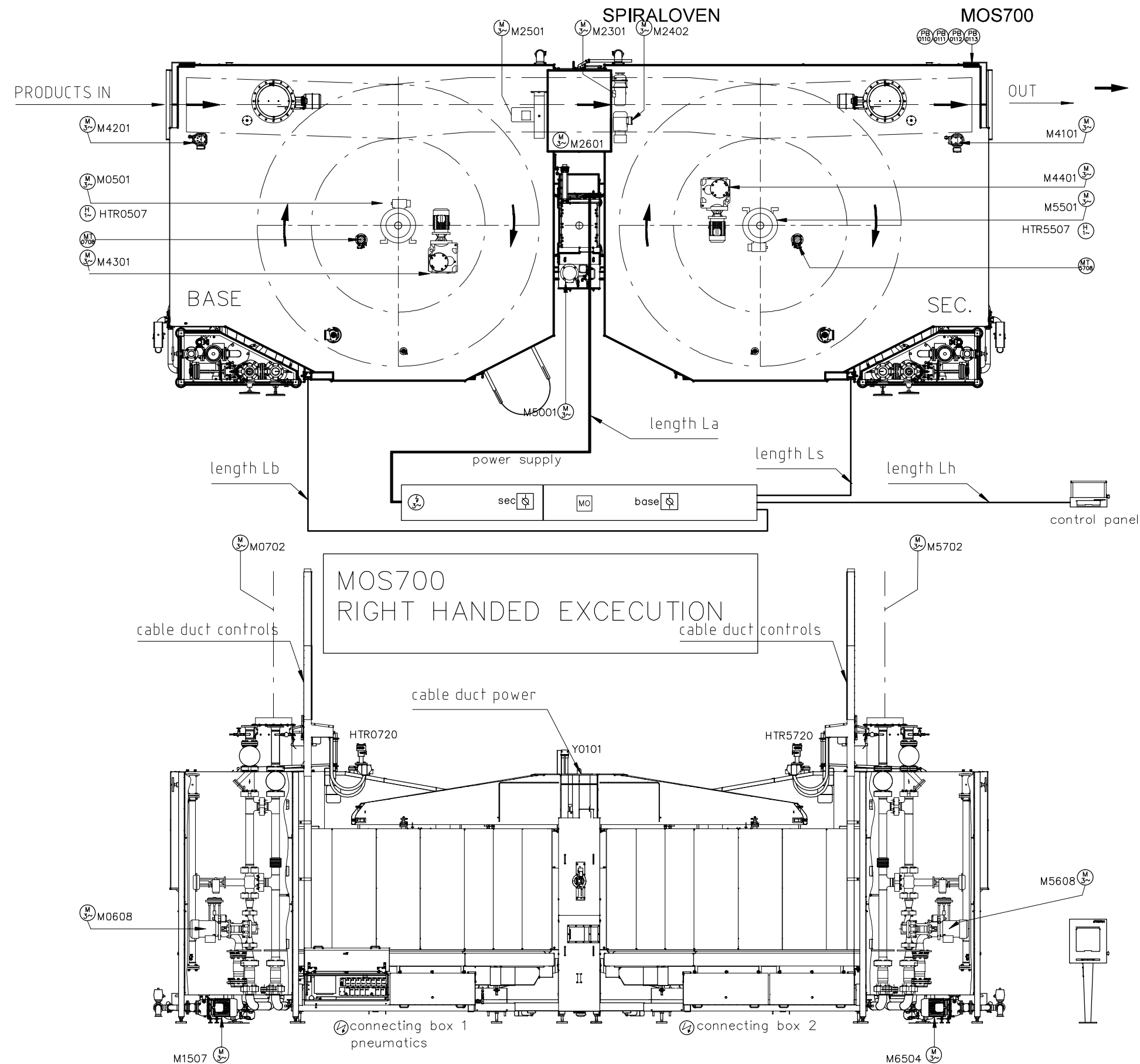
MOS700
RIGHT HANDED EXCECUTION



- drain
- 1) INFED (PRODUCT DRIP)
- 2) TANK (WATER)
- 3) FAN (OPTIONAL, WATER)
- 4) BELT WASHER (WATER)
- 5) SOAKING TANK (WATER)
- 6) OUTFEED (PRODUCT DRIP)
- 7) CIP TANK (WATER, PRODUCT DRIP)
- 8) CIP TANK (WATER, PRODUCT DRIP)
- 9) SKIMMER (PRODUCT DRIP)
- 10) SKIMMER (PRODUCT DRIP)
- ▲ thermal oil
- 1) INPUT BASE TOWER
- 2) OUTPUT BASE TOWER
- 3) INPUT SEC. TOWER
- 4) OUTPUT SEC. TOWER
- steam
- 1) BASE TOWER
- 2) SEC. TOWER
- ⊗ compressed air
- condensate
- 1) STEAM BASE TOWER
- 2) STEAM SEC. TOWER
- ⊗ exhaust
- 1) BASE TOWER
- 2) SEC. TOWER
- 3) optional
- water
- 1) BASE TOWER
- 2) SEC. TOWER
- 3) BELT WASHER SOAKING TANK

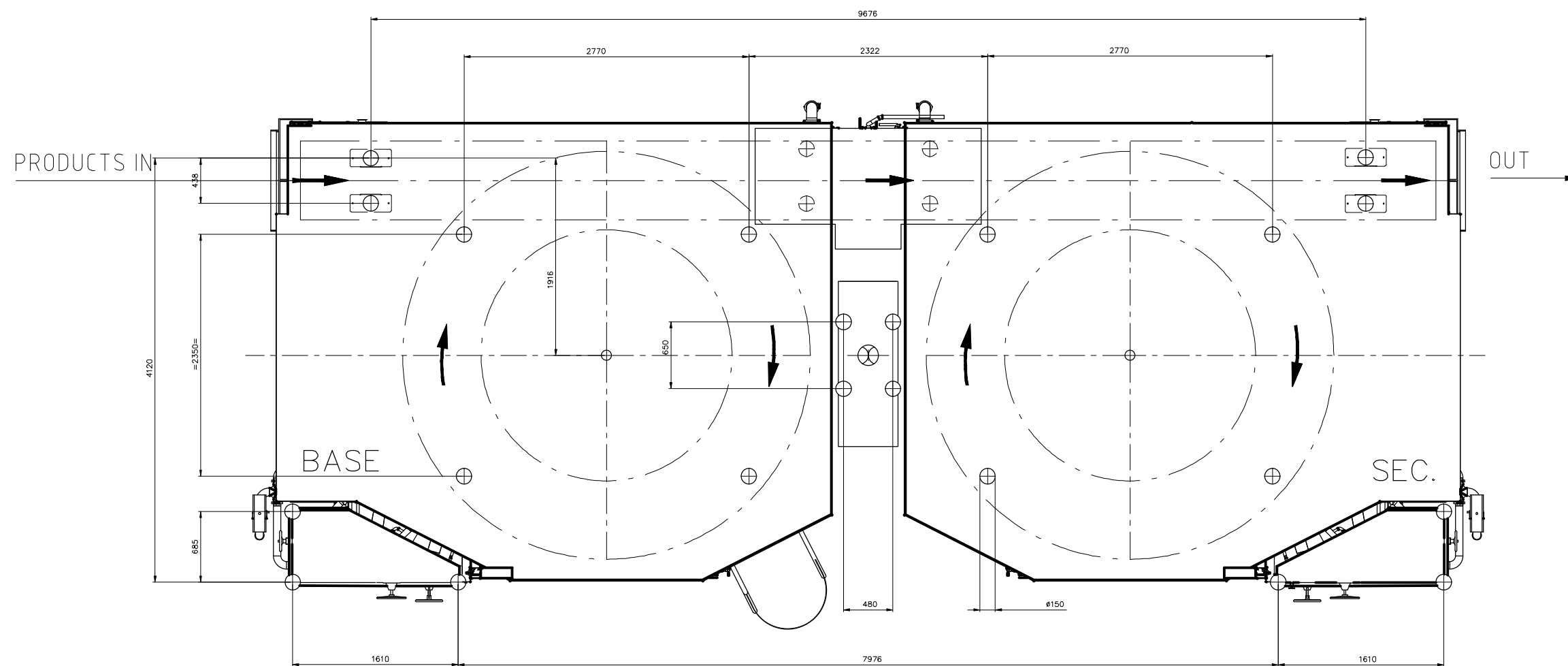
SCALE 1:62.65

CONCEPT



FOOTPRINT

RIGHT HANDED EXCECUTION



Max weight on feet 25 kN

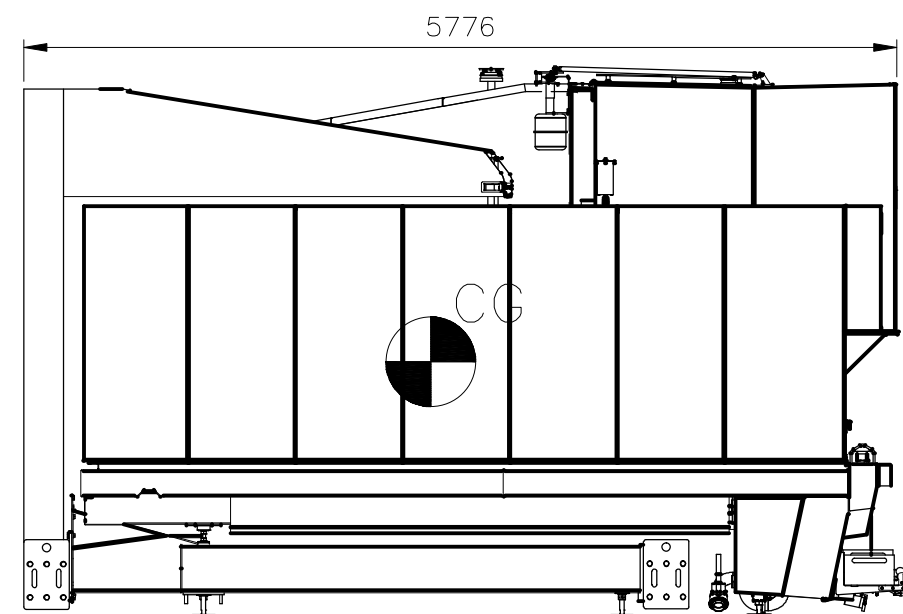
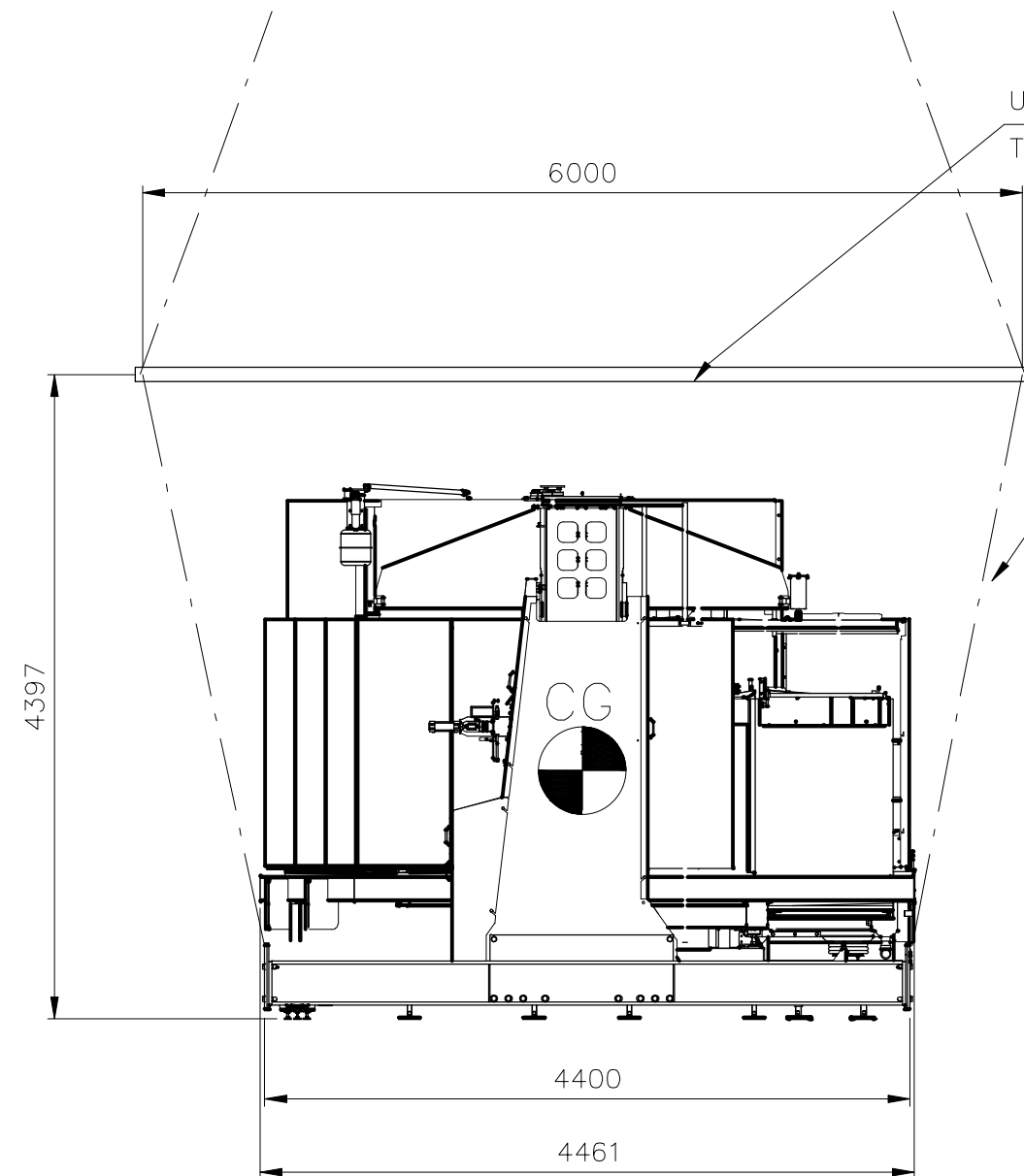
SPIRALOVEN

MOS700

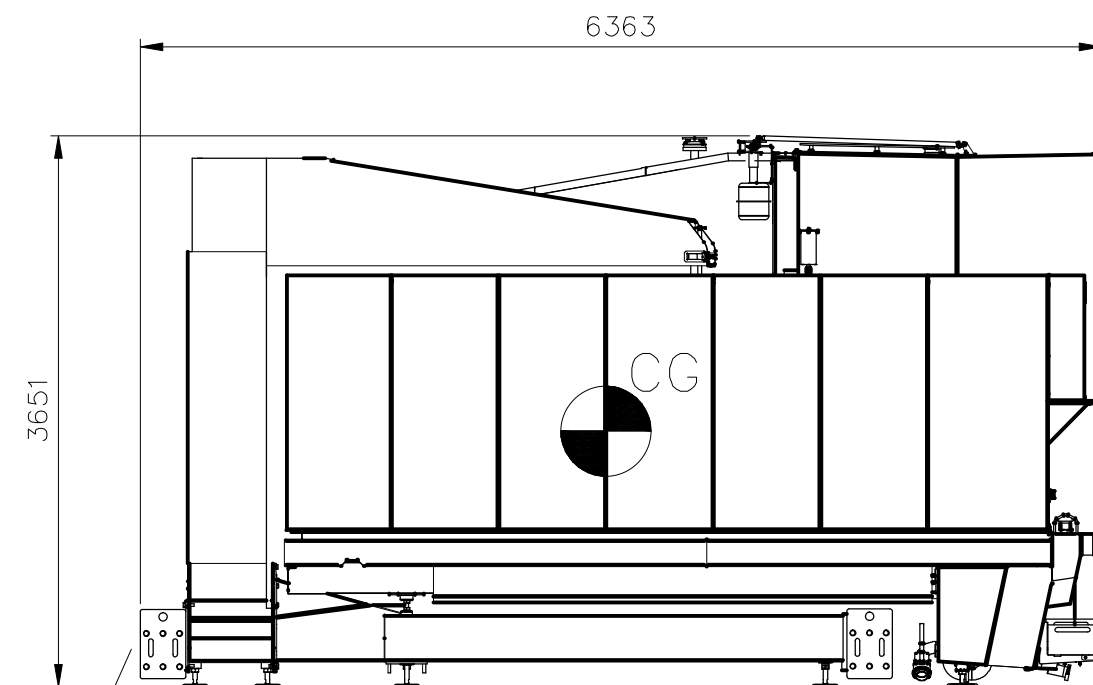
TH0502

USE 1 OR 2 SPREADERS
TO PREVENT DAMAGE OF THE MACHINE

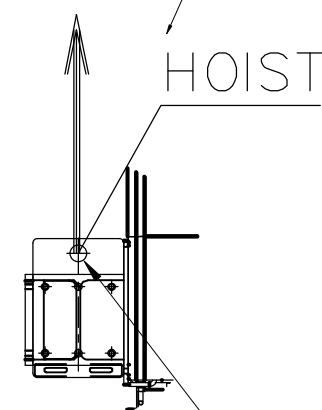
SLINGS OR CHAINS WITH PROTECTIVE COVER



TOWER WITHOUT LIFTING COLOMN



TOWER WITH LIFTING COLOMN

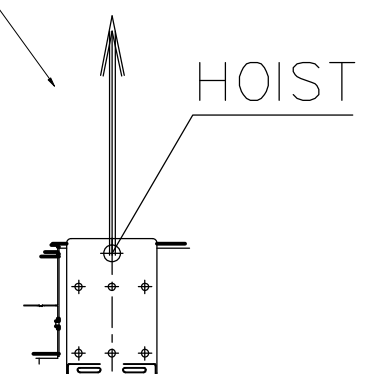


HOIST

CG = CENTER OF GRAVITY

WEIGHT WITH HOISTING GEAR INCLUDED : 20000 Kg

HOLES DIAMETER 55 mm



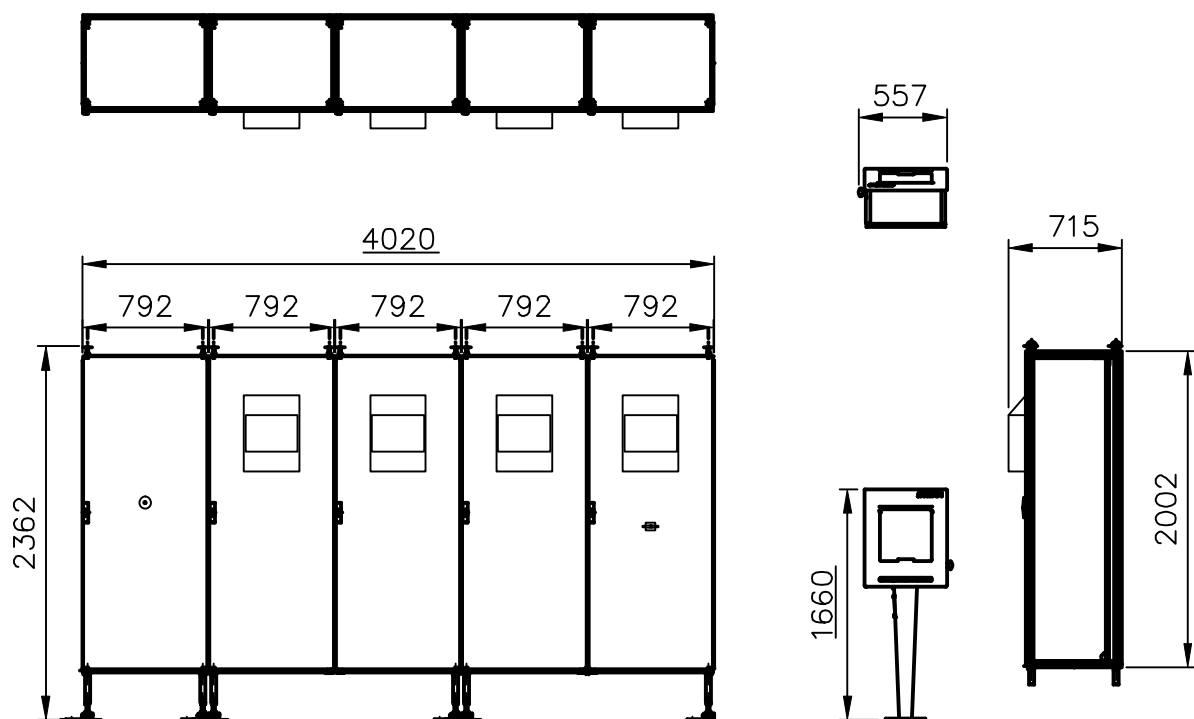
HOIST

SWITCH BOX INCL CONTROL BOX

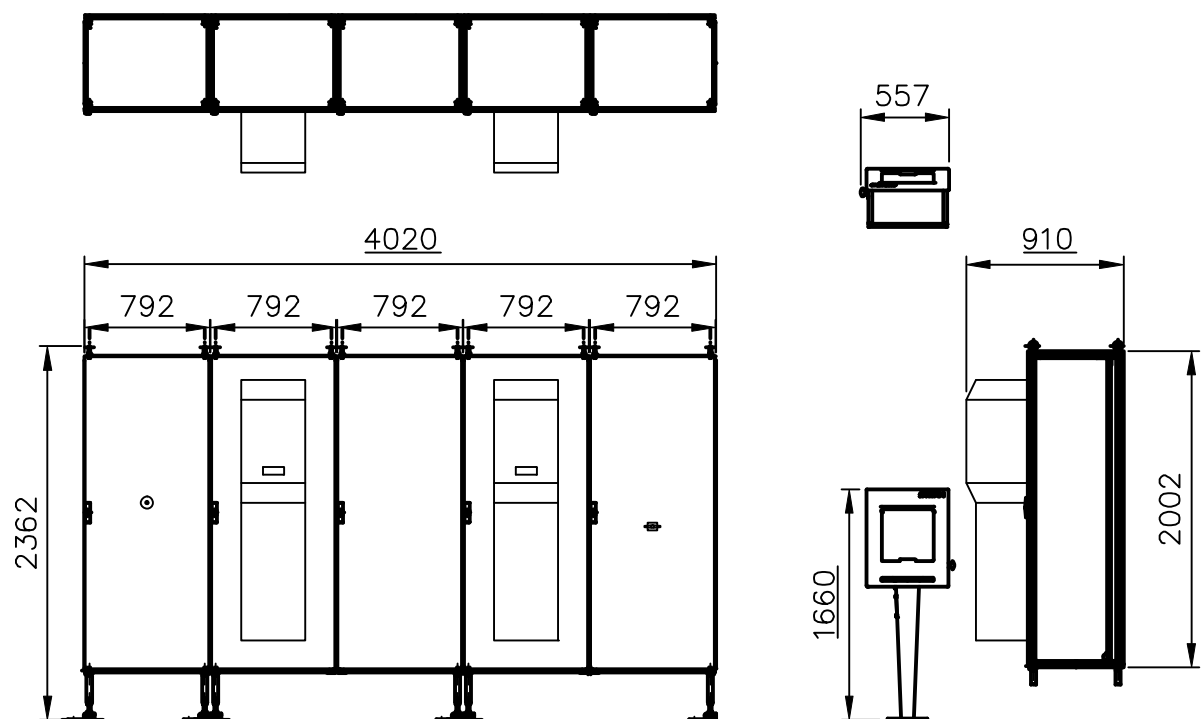
SPIRALOVEN

MOS700

TH0502



SWITCH BOX
FANS (MAX ROOM TEMP. 30°C)



SWITCH BOX
NEMA 4X/AIRCO (MAX ROOM TEMP. 45°C)